

HSF RoHS

SPECIFICATIONS

Signal Rated Current:2.5AMP
 Power Rated Current:30AMP
 Signal Rated Voltage:50V AC
 Power Rated Voltage:250V AC
 Signal Contact Resistance:20mΩ Max
 Power Contact Resistance:2mΩ Max
 Signal Contact Withstand Voltage:1000V AC For 1 Minute
 Power Contact Withstand Voltage:2500V AC For 1 Minute
 Insulation Resistance:1000MΩ Min
 Operation Temperature:-40°C to +105°C

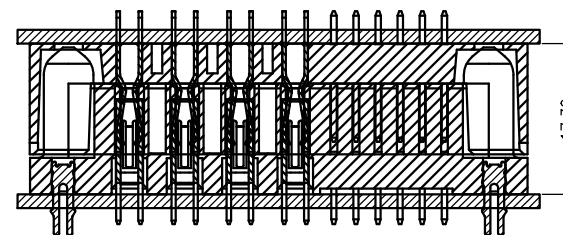
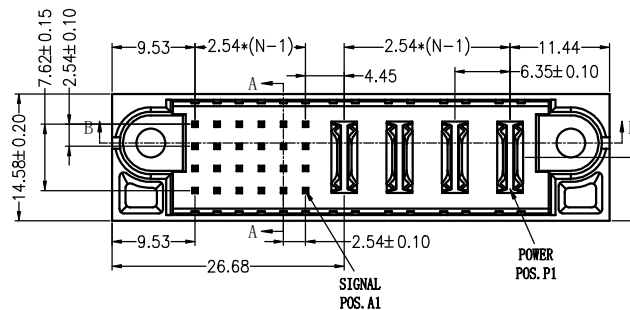
Power Contact Material:Copper Alloy
 Signal Contact Material:Copper Alloy
 Contact Plating:Au or Sn Over Ni
 PEG Material:Copper Alloy
 PEG Plating:Tin Over Ni

Insulator Material:PA6T(UL94V-0)
 Max.Processing Temp: 260°C±5°C For 5~10 Second

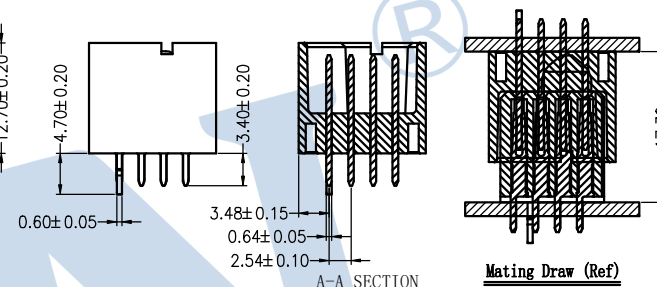
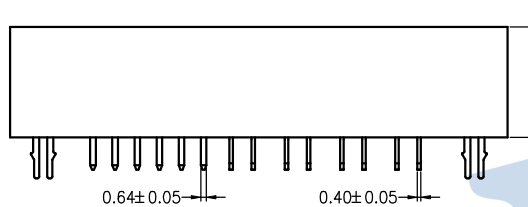
Ordering Information

4500 - 28 M XX C S X 0 X

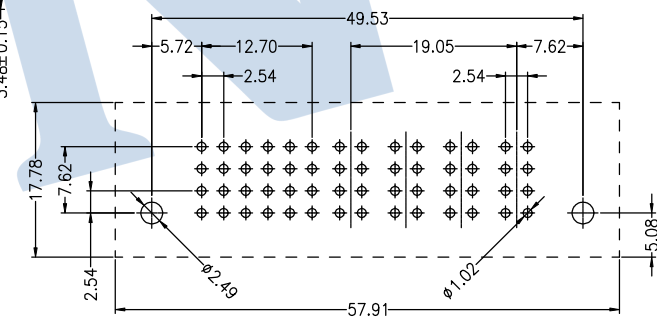
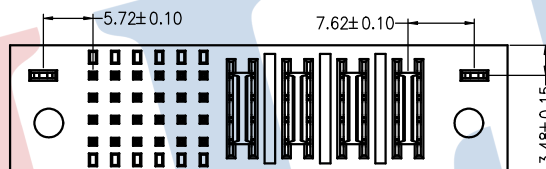
No. of Pins: 24S+4P
 Contact Type: M:Male, F:Female
 Contact Plating: S1:3u" Gold/Tin, S2:5u" Gold/Tin
 Insulator Material Option: C=BK-PA6T
 Packing: A:Tray, T:Tube



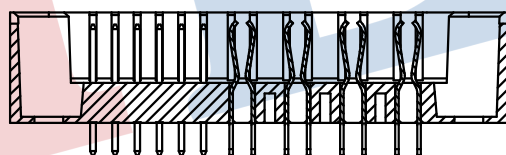
Mating Draw (Ref)



Mating Draw (Ref)



P.C.B Layout



B-B SECTION

				OPERATION		DRAW	zhouqiyong	2022.06.29	SCALE	FIT	JILN ® 深圳市锦凌电子有限公司 SHENZHEN JINLING ELECTRONICS CO.,LTD Tel: 86-755-27483253 Fax: 86-755-2997-5588	
				X.X	±0.30				UNIT	mm		
				X.XX	±0.20	CHECK		SIZE	A4	PART NO. 4500-28MXXCSX0X		
				X.XXX	±0.10							
A0	2022.06.29	NEW DRAWING		Angle	±3°	APPROVE		SHEET	1/1	TITLE: HCP 24S+4P 电源座 直公		
REV	DATE	MODIFICATION DESCRIPTION		DIM	TOL							PROJ.