

HSF RoHS

SPECIFICATIONS

Signal Rated Current:2.5AMP
 Power Rated Current:30AMP
 Signal Rated Voltage:50V AC
 Power Rated Voltage:250V AC
 Signal Contact Resistance:20mΩ Max
 Power Contact Resistance:2mΩ Max
 Signal Contact Withstand Voltage:1000V AC For 1 Minute
 Power Contact Withstand Voltage:2500V AC For 1 Minute
 Insulation Resistance:1000MΩ Min
 Operation Temperature:-40°C to +105°C

Power Contact Material:Copper Alloy
 Signal Contact Material:Copper Alloy
 Contact Plating:Au or Sn Over Ni
 PEG Material:Copper Alloy
 PEG Plating:Tin Over Ni
 Insulator Material:PA6T(UL94V-0)
 Max.Processing Temp: 260°C±5°C For 5~10 Second

Ordering Information

4500 - 28 F XX C S X 0X

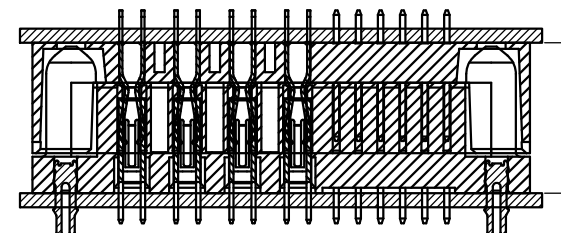
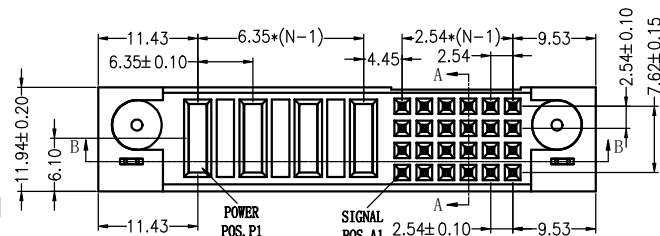
No. of Pins
24S+4P

Contact Type
M:Male
F:Female

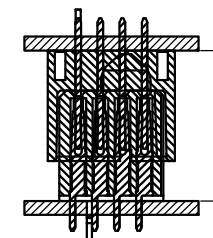
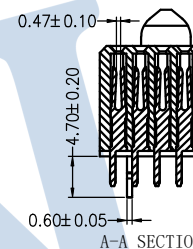
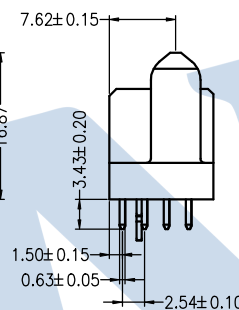
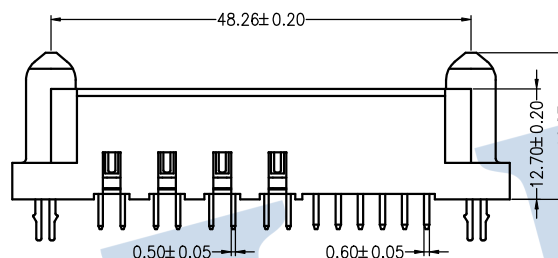
Contact Plating
S1:3u" Gold/Tin
S2:5u" Gold/Tin

Insulator Material Option
C=BK-PA6T

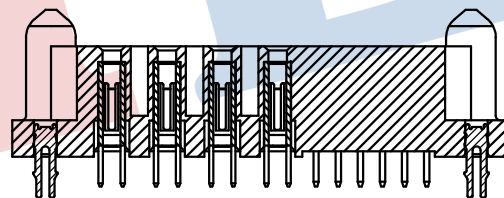
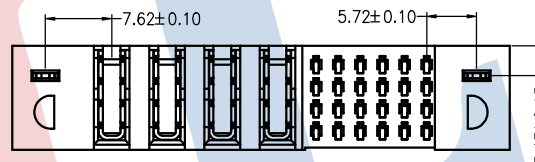
Packing
A:Tray
T:Tube



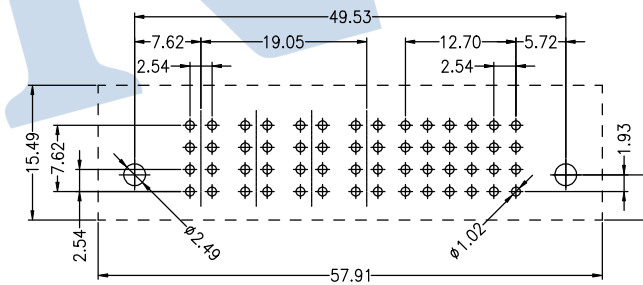
Mating Draw (Ref)



Mating Draw (Ref)



B-B SECTION



P.C.B Layout

				OPERATION		DRAW	zhouqiyong	2022.06.29	SCALE	FIT	JILN ® 深圳市锦凌电子有限公司 SHENZHEN JINLING ELECTRONICS CO.,LTD Tel: 86-755-27483253 Fax: 86-755-2997-5588	
				X.X	±0.30				UNIT	mm		
				X.XX	±0.20	CHECK			SIZE	A4	PART NO.	4500-28FXXCSX0X
				X.XXX	±0.10							
A0	2022.06.29	NEW DRAWING		Angle	±3°	APPROVE			SHEET	1/1	TITLE:	HCP 24S+4P 电源座 直母
REV	DATE	MODIFICATION DESCRIPTION		DIM	TOL							